

REBI EXCLUSIVE PROPERTY REBI EXCLUSIVE PROPERTY REBI EXCLUSIVE PROPERTY



# Bosque de Limas



3 Bedrooms



4 Bathrooms



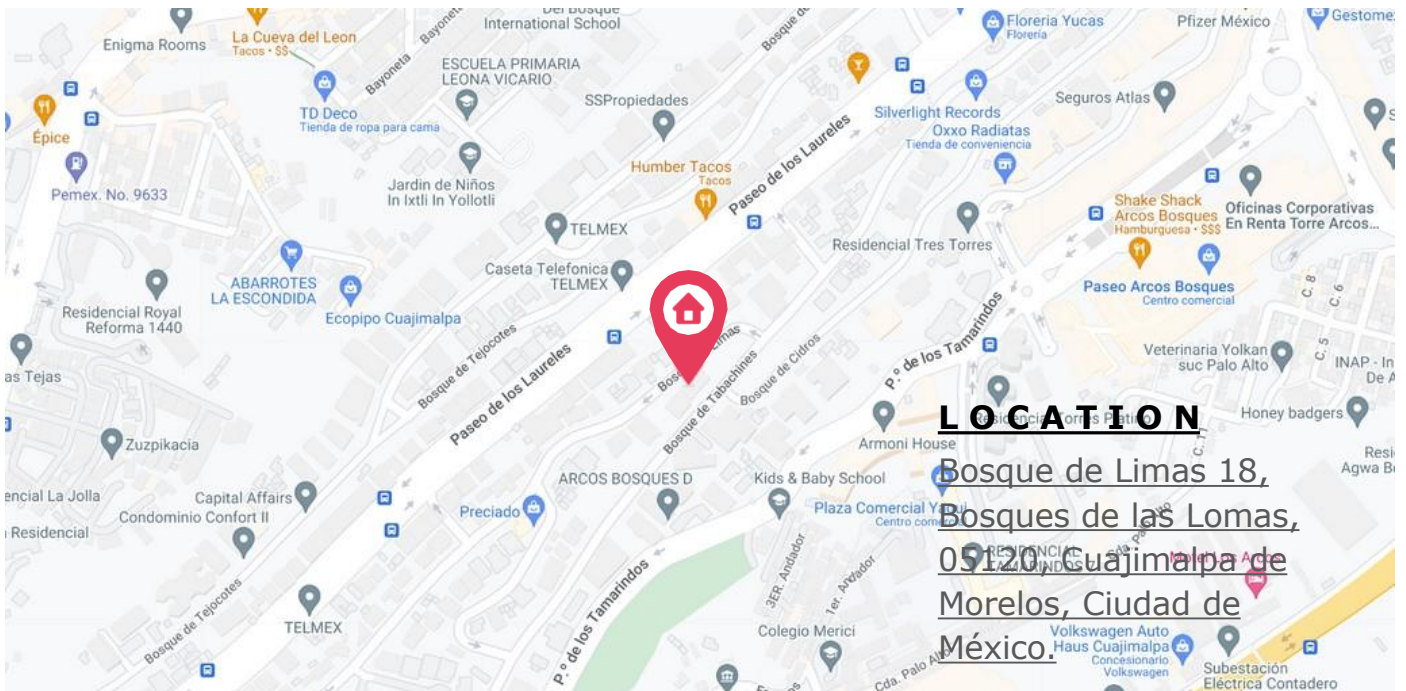
2 parking spot



790 m<sup>2</sup>



90135 m<sup>2</sup>



### LOCATION

**Bosque de Limas 18,  
Bosques de las Lomas,  
05120, Cuajimalpa de  
Morelos, Ciudad de  
México.**

# About it



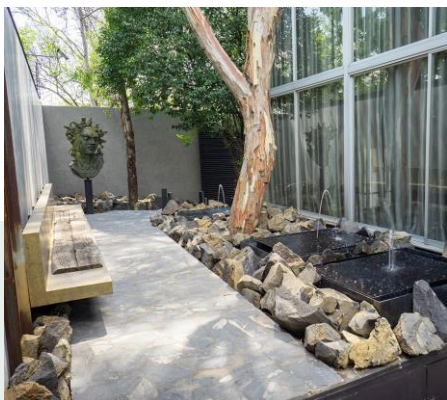
This stunning House for Sale in Bosques de las Lomas features an elegant triple-height foyer, spacious gym, movie theater, bar, and a cozy dining room. In addition, it has a recently expanded and remodeled garden, equipped kitchen, a maid's room and a chauffeur's room, both with full bathrooms.

The property has an architectural project to expand the garage and one of the bedrooms. With private security and 24-hour surveillance, this property is ideal for those seeking an exceptional home in one of the most exclusive areas of Mexico City.

Located on Bosque de Limas, one of the most exclusive streets in the area, this property is perfect for those looking to live in a privileged location. Don't miss the opportunity to live in this beautiful house.

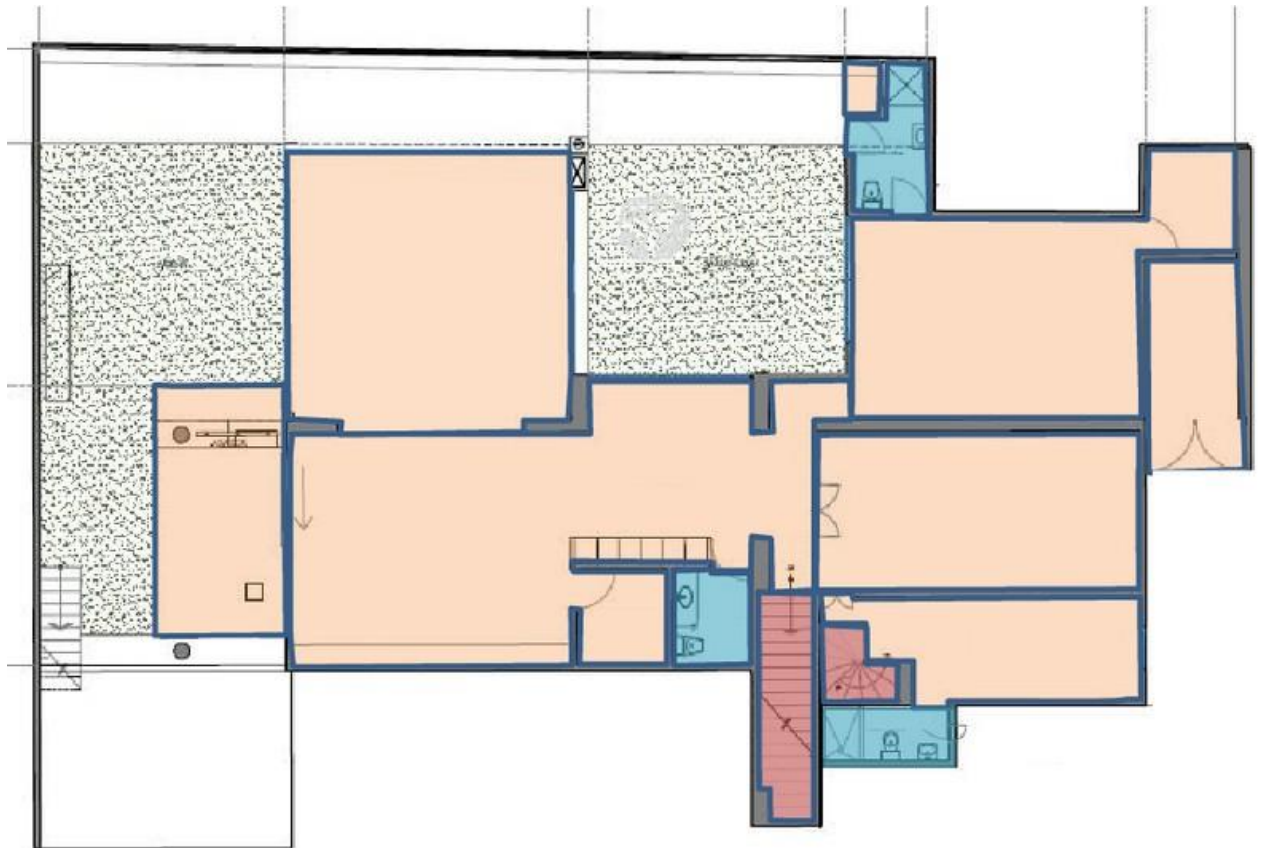
## EQUIPMENT



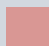

- BBQ Area
- Gym Area
- TV Area
- Cellar
- Kitchen
- Dining Room
- Service Room
- Office / Study
- Garden
- Private
- Security and Surveillance
- Main Lobby



# Technical information

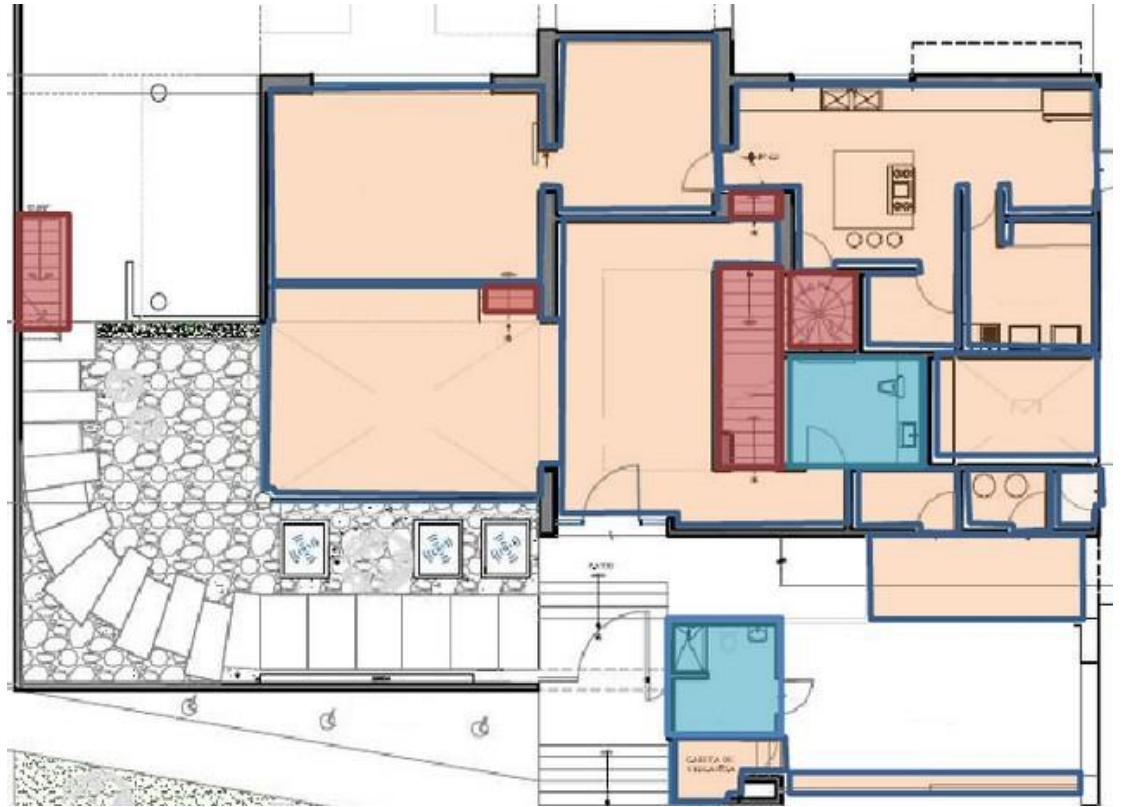
Basement



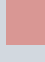



COLOR	AREA	METERS
	TOTAL RENTABLE AREA	237.60 M <sup>2</sup>
	SERVICES	14.70 M <sup>2</sup>
	VERTICAL CIRCULATION	10.31 M <sup>2</sup>
	TOTAL CONSTRUCTION	285.63 M <sup>2</sup>

# Technical information

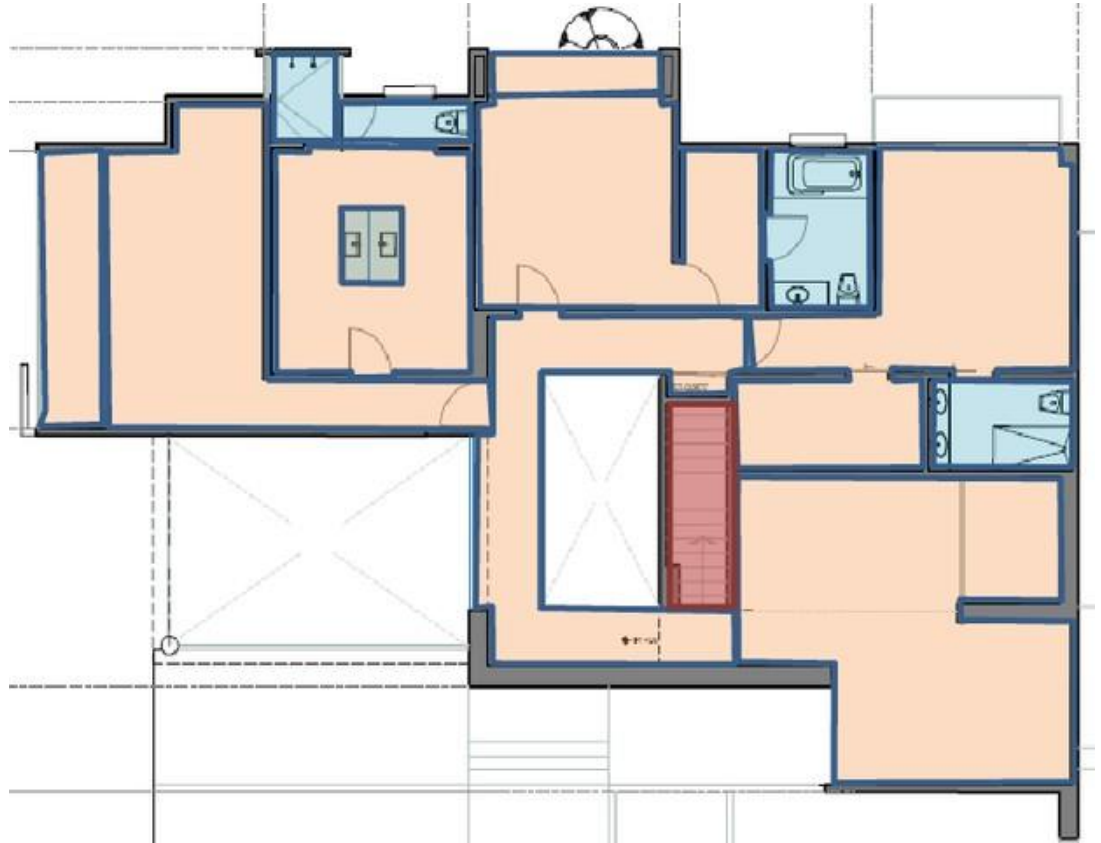
Ground Floor



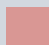



COLOR	AREA	METERS
	TOTAL RENTABLE AREA	222.31 M <sup>2</sup>
	SERVICES	16.18 M <sup>2</sup>
	VERTICAL CIRCULATION	12.67 M <sup>2</sup>
	TOTAL CONSTRUCTION	284.93 M <sup>2</sup>

# Technical information

First Floor



COLOR	AREA	METERS
	TOTAL RENTABLE AREA	185.90 M <sup>2</sup>
	SERVICES	22.30 M <sup>2</sup>
	VERTICAL CIRCULATION	6.10 M <sup>2</sup>
	TOTAL CONSTRUCTION	234.82 M <sup>2</sup>

# Technical information

## Area Distribution

TOTAL RENTABLE AREA	
AREA	METERS
RENTABLE AREA GROUND FLOOR	222.31 M2
RENTABLE AREA 1ST FLOOR	185.90 M2
BASEMENT	237.60 M2
TOTAL	645.81 M2

TOTAL CONSTRUCTION	
AREA	METERS
CONSTRUCTION GROUND FLOOR	284.93 M2
CONSTRUCTION 1ST FLOOR	234.82 M2
BASEMENT	237.60 M2
TOTAL	901.35 M2

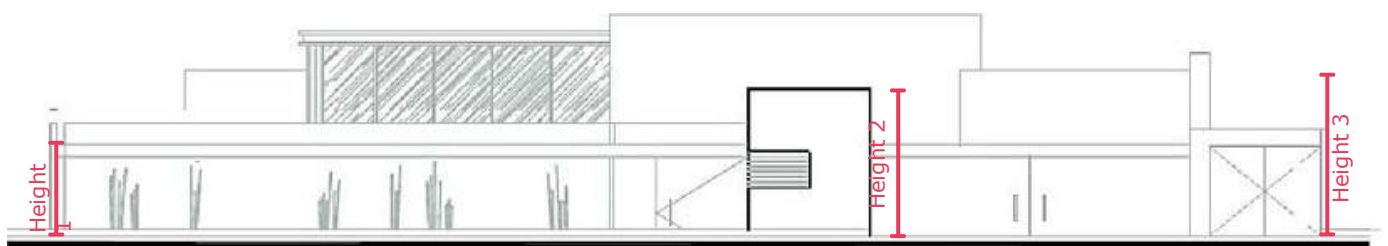
TOTAL CIRCULATION	
AREA	METERS
CIRCULATION GROUND FLOOR	12.67 M2
CIRCULATION 1ST FLOOR	6.10 M2
BASEMENT	10.31 M2
TOTAL	29.08 M2

TOTAL SERVICES	
AREA	METERS
SERVICES GROUND FLOOR	16.18 M2
SERVICES 1ST FLOOR	22.30 M2
BASEMENT	14.70 M2
TOTAL	53.18 M2

TOTAL CIRCULATION	
AREA	METERS
PROPERTY AREA	790.35 M2

# Technical information

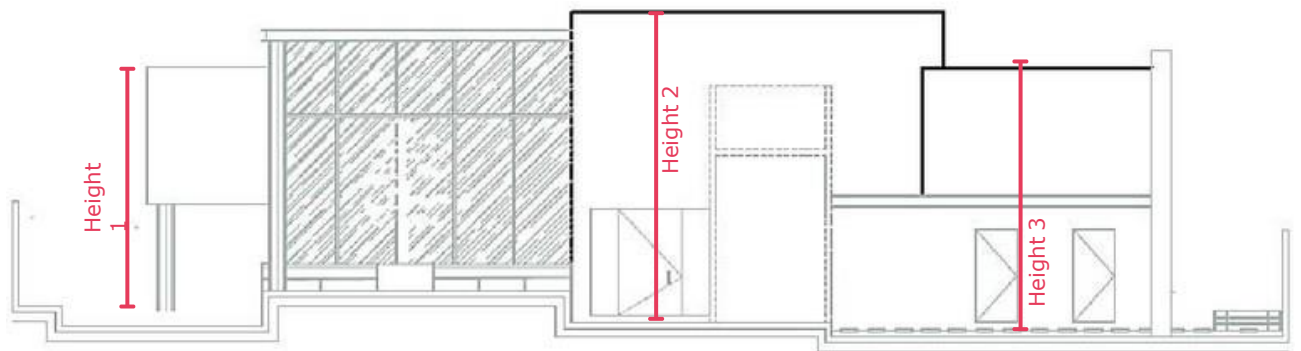
## Facade 1



HEIGHTS	
DESCRIPTION	METROS
HEIGHT 1	2.50 M 2
HEIGHT 2	3.47 M 2
HEIGHT 3	4.30 M 2

# Technical information

## Facade 2



HEIGHTS	
DESCRIPTION	METROS
HEIGHT 1	6.09 M2
HEIGHT 2	7.32 M2
HEIGHT 3	6.35 M2



